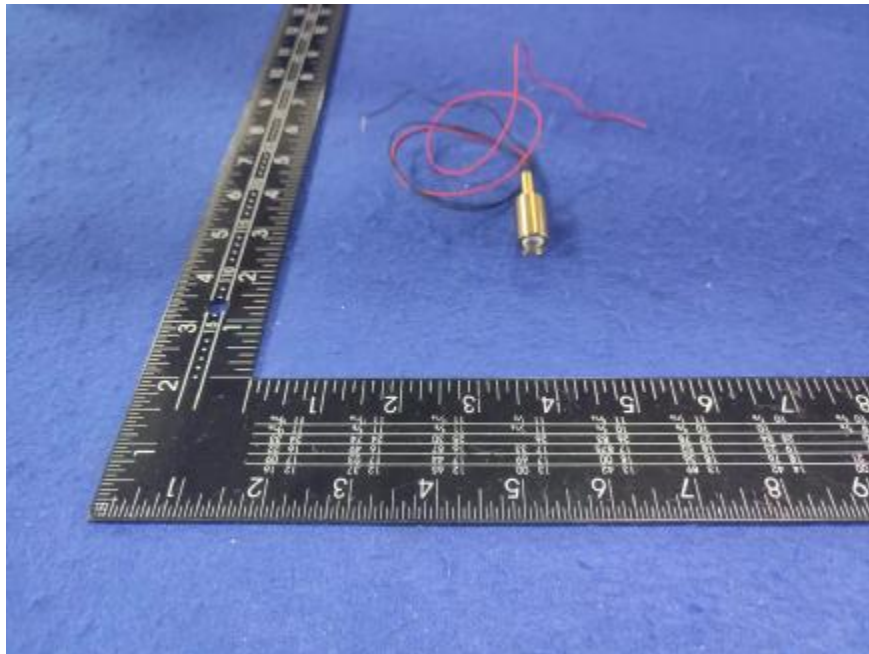


Luminaire Photograph



Light Output Ratio:	76.3%	
Luminaire Power:	0.8776 W	
SHR Nominal:	0.50	Calculated using the TM5
SHR Maximum:	0.55	fine grid method.

C Range: 0 - 360DEG
C Interval: 30.0DEG
Test Speed: HIGH
Temperature: 25.3 °C
Operators: zoe
Test Date: 2024-10-16

Range: 0 - 180DEG
Interval: 1.0DEG
Test System: EVERFINE GO-SPEX500_V1 SYSTEM V2.00.461
Humidity: 65.0%
Test Distance: 3.160m [K=1.0000]
Remarks: LAMP: BXEX-30G-11H-3A-00-0-0 Ra: 90
LENS: 20R
NOT DRIVER: 300mA
30minutes warm-up

LUMINOUS INTENSITY DISTRIBUTION DIAGRAM

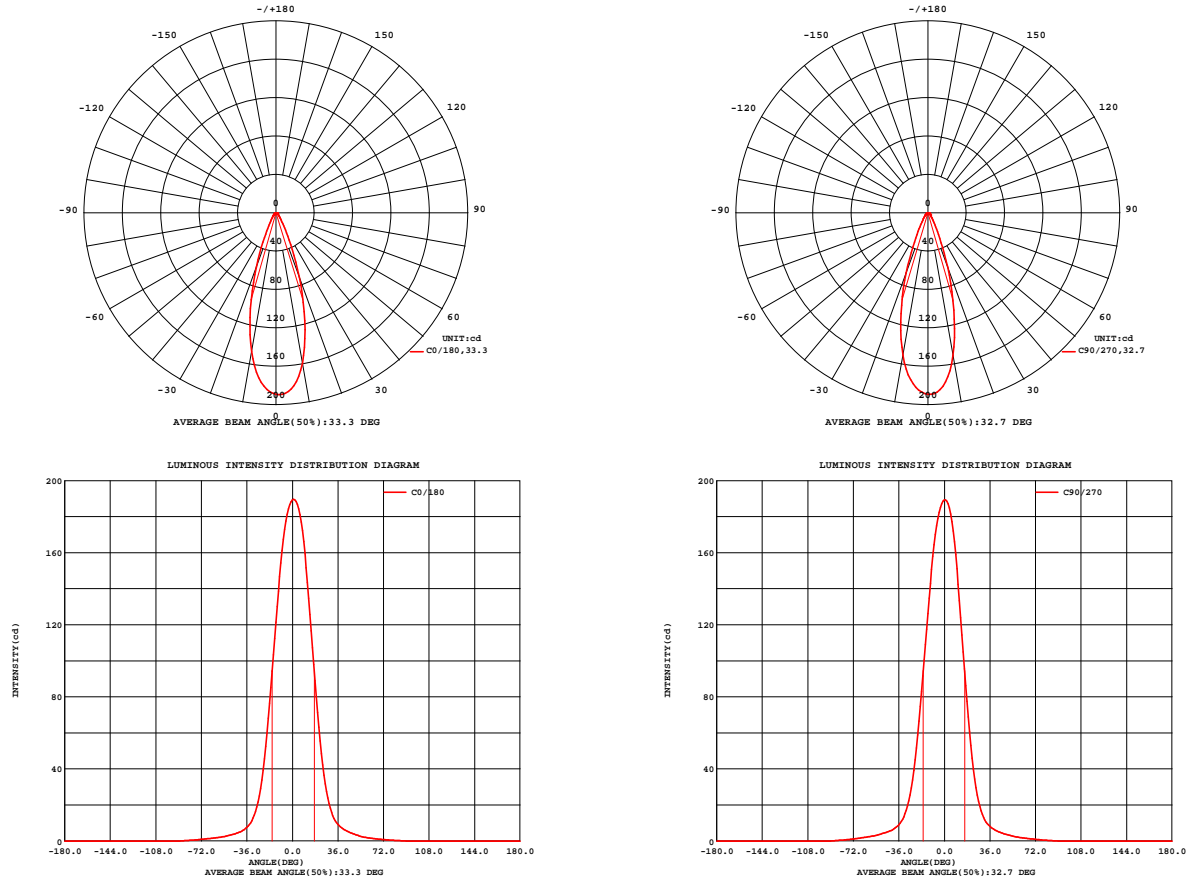


Fig. C0/C180

Fig. C90/C270

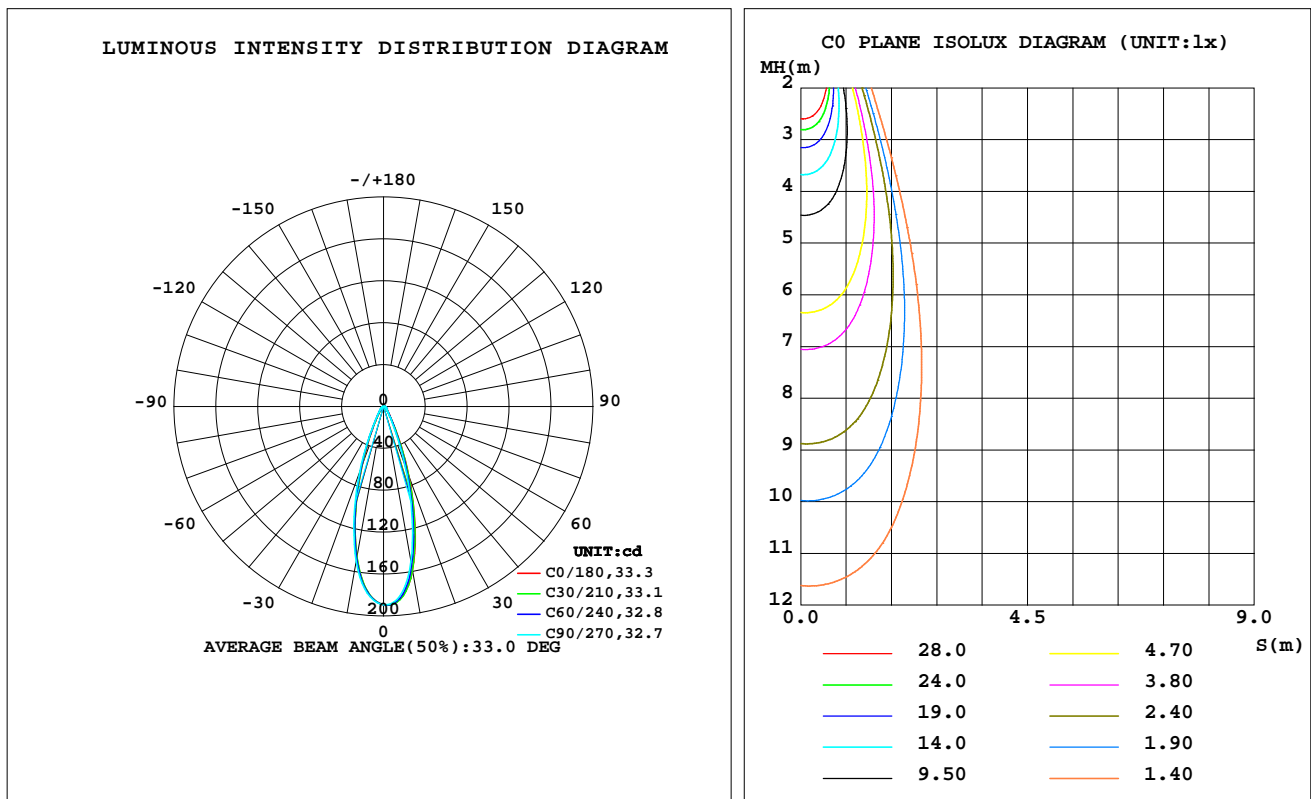
C Range: 0 - 360DEG
C Interval: 30.0DEG
Test Speed: HIGH
Temperature: 25.3 °C
Operators: zoe
Test Date: 2024-10-16

Range: 0 - 180DEG
Interval: 1.0DEG
Test System: EVERFINE GO-SPEX500_V1 SYSTEM V2.00.461
Humidity: 65.0%
Test Distance: 3.160m [K=1.0000]
Remarks: LAMP: BXEX-30G-11H-3A-00-0-0 Ra: 90
LENS: 20R
NOT DRIVER: 300mA
30minutes warm-up

LUMINAIRE PHOTOMETRIC TEST REPORT

Test:U:2.9254V I:0.3000A P:0.8776W PF:1.0000 Freq:49.99Hz Lamp Flux:99.5902x1 lm		
NAME: 2468.105	TYPE:	WEIGHT:
SPEC.: 3000K	DIM.:	SERIAL No.: 2410161251
MFR.: RISE	SUR.: 0.00005024m2	Shielding Angle:

DATA OF LAMP		PHOTOMETRIC DATA Eff: 86.55 lm/W			
MODEL	Brideglux	I _{max} (cd)	189.7	S/MH(C0/180)	0.53
NOMINAL POWER(W)	1	LOR(%)	76.3	S/MH(C90/270)	0.55
RATED VOLTAGE(V)	3	TOTAL FLUX(lm)	75.956	UP,DN(C0-180)	0.0,37.8
NOMINAL FLUX(lm)	99.5902	CIE CLASS	DIRECT	UP,DN(C180-360)	0.0,38.4
LAMPS INSIDE	1	up(%)	0.0	CIBSE SHR NOM	0.50
TEST VOLTAGE(V)	3	down(%)	76.3	CIBSE SHR MAX	0.55



C Range: 0 - 360DEG
C Interval: 30.0DEG
Test Speed: HIGH
Temperature:25.3℃
Operators:zoe
Test Date:2024-10-16

Range: 0 - 180DEG
Interval: 1.0DEG
Test System:EVERFINE GO-SPEX500_V1 SYSTEM V2.00.461
Humidity:65.0%
Test Distance:3.160m [K=1.0000]
Remarks: LAMP:BXEX-30G-11H-3A-00-0-0 Ra:90
LENS:20R
NOT DRIVER:300mA
30minutes warm-up

ZONAL FLUX DIAGRAM

ZONAL FLUX DIAGRAM:

	C0	C45	C90	C135	C180	C225	C270	C315		zone	total	%lum,lamp
10	159.3	156.8	151.0	147.5	146.7	147.1	150.7	156.3	0- 10	16.33	16.33	21.5,16.4
20	71.35	67.41	60.64	59.04	59.98	62.38	66.58	71.14	10- 20	29.40	45.74	60.2,45.9
30	18.14	16.77	14.79	14.19	14.30	15.58	17.05	18.43	20- 30	15.60	61.34	80.8,61.6
40	6.826	6.588	6.176	6.129	5.505	5.927	6.640	7.296	30- 40	6.209	67.55	88.9,67.8
50	3.493	3.312	3.394	3.354	3.117	3.194	3.898	4.130	40- 50	3.665	71.21	93.8,71.5
60	1.740	1.639	1.932	1.890	1.816	1.793	2.320	2.304	50- 60	2.330	73.54	96.8,73.8
70	0.9205	0.8701	1.077	1.041	1.036	0.9772	1.289	1.233	60- 70	1.446	74.99	98.7,75.3
80	0.3842	0.3565	0.4156	0.4270	0.4312	0.4100	0.5199	0.4973	70- 80	0.7525	75.74	99.7,76.1
90	0	0	0	0	0	0	0	0	80- 90	0.2129	75.96	100,76.3
100	0	0	0	0	0	0	0	0	90-100	0	75.96	100,76.3
110	0	0	0	0	0	0	0	0	100-110	0	75.96	100,76.3
120	0	0	0	0	0	0	0	0	110-120	0	75.96	100,76.3
130	0	0	0	0	0	0	0	0	120-130	0	75.96	100,76.3
140	0	0	0	0	0	0	0	0	130-140	0	75.96	100,76.3
150	0	0	0	0	0	0	0	0	140-150	0	75.96	100,76.3
160	0	0	0	0	0	0	0	0	150-160	0	75.96	100,76.3
170	0	0	0	0	0	0	0	0	160-170	0	75.96	100,76.3
180	0	0	0	0	0	0	0	0	170-180	0	75.96	100,76.3
DEG	LUMINOUS INTENSITY:cd									UNIT:lm		

C Range: 0 - 360DEG
C Interval: 30.0DEG
Test Speed: HIGH
Temperature:25.3℃
Operators:zoe
Test Date:2024-10-16

Range: 0 - 180DEG
Interval: 1.0DEG
Test System:EVERFINE GO-SPEX500_V1 SYSTEM V2.00.461
Humidity:65.0%
Test Distance:3.160m [K=1.0000]
Remarks: LAMP:BXEX-30G-11H-3A-00-0-0 Ra:90
LENS:20R
NOT DRIVER:300mA
30minutes warm-up

LUMINANCE LIMITATION CURVES

Test:U:2.9254V I:0.3000A P:0.8776W PF:1.0000 Freq:49.99Hz
Lamp Flux:99.5902x1 lm

NAME: 2468.105

TYPE:

WEIGHT:

SPEC.: 3000K

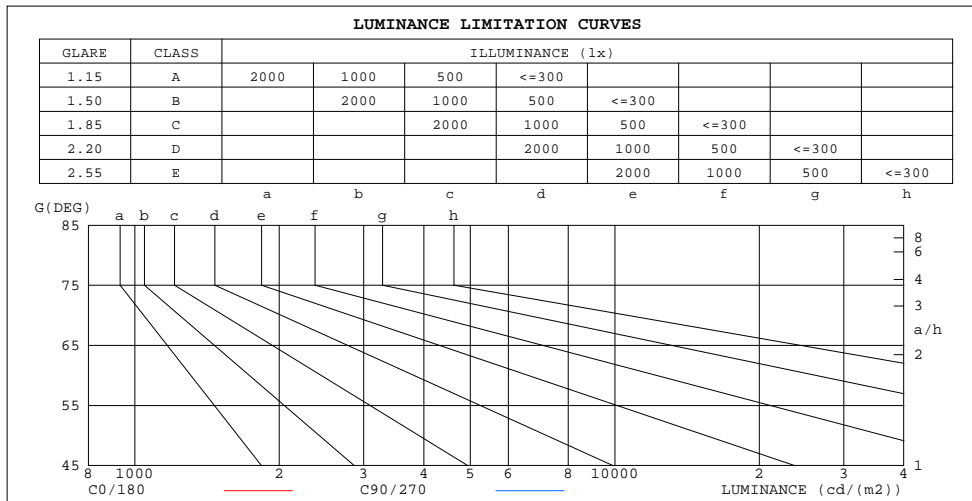
DIM.:

SERIAL No.: 2410161251

MFR.: RISE

SUR.: 0.00005024m2

Shielding Angle:



LUMINANCE cd/(m2)		
G(180)	G(270)	a/h
85	45981	41575
80	43990	47667
75	47622	54898
70	53515	62722
65	60481	69911
60	69209	76946
55	84483	87997
50	108041	105179
45	136841	127170

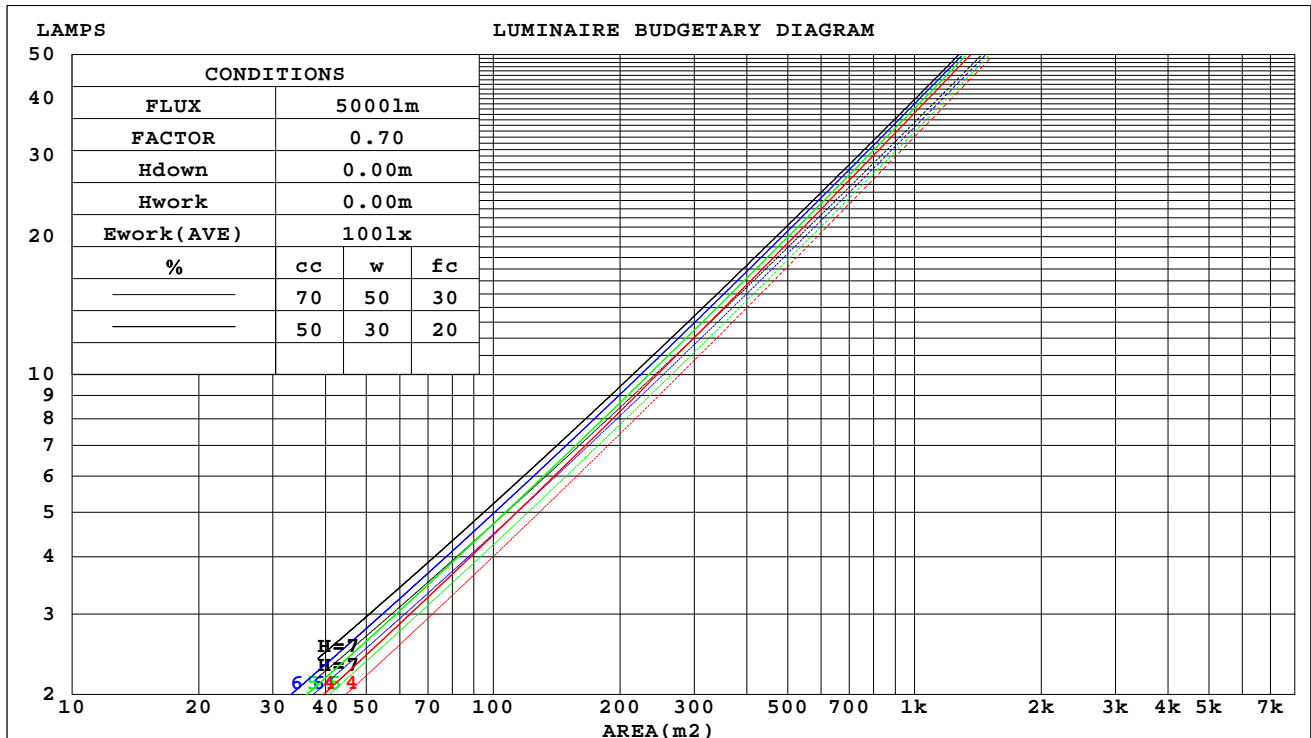
C Range: 0 - 360DEG
C Interval: 30.0DEG
Test Speed: HIGH
Temperature:25.3℃
Operators:zoe
Test Date:2024-10-16

Range: 0 - 180DEG
Interval: 1.0DEG
Test System:EVERFINE GO-SPEX500_V1 SYSTEM V2.00.461
Humidity:65.0%
Test Distance:3.160m [K=1.0000]
Remarks: LAMP:BXEX-30G-11H-3A-00-0-0 Ra:90
LENS:20R
NOT DRIVER:300mA
30minutes warm-up

CU AND LUMINAIRE BUDGETARY ESTIMATE DIAGRAM

Test:U:2.9254V I:0.3000A P:0.8776W PF:1.0000 Freq:49.99Hz Lamp Flux:99.5902x1 lm		
NAME: 2468.105	TYPE:	WEIGHT:
SPEC.: 3000K	DIM.:	SERIAL No.: 2410161251
MFR.: RISE	SUR.: 0.00005024m2	Shielding Angle:

cc	80%			70%			50%			30%			10%			0
w	50%	30%	10%	50%	30%	10%	50%	30%	10%	50%	30%	10%	50%	30%	10%	0
fc	20%			20%			20%			20%			20%			0
RCR	RCR:Room Cavity Ratio Coefficients of Utilization(CU)															
0.0	.91	.91	.91	.89	.89	.89	.85	.85	.85	.81	.81	.81	.78	.78	.78	.76
1.0	.85	.83	.81	.83	.81	.80	.80	.79	.77	.77	.76	.75	.75	.74	.73	.72
2.0	.79	.76	.74	.78	.75	.73	.76	.73	.71	.73	.71	.70	.71	.70	.68	.67
3.0	.75	.71	.68	.74	.70	.68	.72	.69	.67	.70	.67	.66	.68	.66	.65	.63
4.0	.70	.67	.64	.70	.66	.63	.68	.65	.62	.66	.64	.62	.65	.63	.61	.60
5.0	.67	.63	.60	.66	.62	.60	.65	.62	.59	.64	.61	.59	.62	.60	.58	.57
6.0	.64	.59	.57	.63	.59	.56	.62	.59	.56	.61	.58	.56	.60	.57	.55	.54
7.0	.61	.57	.54	.60	.56	.54	.59	.56	.53	.58	.55	.53	.58	.55	.53	.52
8.0	.58	.54	.51	.58	.54	.51	.57	.53	.51	.56	.53	.51	.55	.53	.51	.50
9.0	.56	.52	.49	.55	.52	.49	.55	.51	.49	.54	.51	.49	.53	.51	.49	.48
10.0	.53	.50	.47	.53	.49	.47	.53	.49	.47	.52	.49	.47	.52	.49	.47	.46



C Range: 0 - 360DEG
C Interval: 30.0DEG
Test Speed: HIGH
Temperature: 25.3℃
Operators: zoe
Test Date: 2024-10-16

```

Range: 0 - 180DEG
Interval: 1.0DEG
Test System:EVERFINE GO-SPEX500_V1 SYSTEM V2.00.461
Humidity:65.0%
Test Distance:3.160m [K=1.0000]
Remarks: LAMP:BXEX-30G-11H-3A-00-0 Ra:90
          LENS:20R
          NOT DRIVER:300mA
          30minutes warm-up

```

WEC AND CCEC

Test:U:2.9254V I:0.3000A P:0.8776W PF:1.0000 Freq:49.99Hz Lamp Flux:99.5902x1 lm		
NAME: 2468.105	TYPE:	WEIGHT:
SPEC.: 3000K	DIM.:	SERIAL No.: 2410161251
MFR.: RISE	SUR.: 0.00005024m2	Shielding Angle:

cc	80%			70%			50%			30%			10%			0
w	50%	30%	10%	50%	30%	10%	50%	30%	10%	50%	30%	10%	50%	30%	10%	0
fc	20%			20%			20%			20%			20%			0
RCR	RCR:Room Cavity Ratio						Wall Exitance Coefficients(WEC)									
0.0																
1.0	.132	.075	.024	.127	.072	.023	.117	.067	.021	.108	.062	.020	.100	.058	.019	
2.0	.124	.068	.021	.120	.066	.020	.112	.062	.019	.104	.058	.018	.097	.055	.017	
3.0	.116	.062	.018	.112	.060	.018	.106	.057	.017	.099	.054	.017	.093	.052	.016	
4.0	.109	.057	.017	.106	.055	.016	.100	.053	.016	.095	.051	.015	.090	.049	.015	
5.0	.103	.052	.015	.100	.051	.015	.095	.049	.015	.090	.048	.014	.086	.046	.014	
6.0	.097	.049	.014	.095	.048	.014	.090	.046	.013	.086	.045	.013	.082	.043	.013	
7.0	.092	.045	.013	.090	.045	.013	.086	.043	.013	.082	.042	.012	.079	.041	.012	
8.0	.087	.043	.012	.086	.042	.012	.082	.041	.012	.079	.040	.012	.076	.039	.011	
9.0	.083	.040	.011	.082	.040	.011	.079	.039	.011	.076	.038	.011	.073	.037	.011	
10.0	.079	.038	.011	.078	.038	.011	.075	.037	.010	.073	.036	.010	.070	.035	.010	

cc	80%			70%			50%			30%			10%			0
w	50%	30%	10%	50%	30%	10%	50%	30%	10%	50%	30%	10%	50%	30%	10%	0
fc	20%			20%			20%			20%			20%			0
RCR	RCR:Room Cavity Ratio			Ceiling Cavity Exitance Coefficients(CCEC)												
0.0	.145	.145	.145	.124	.124	.124	.085	.085	.085	.049	.049	.049	.016	.016	.016	
1.0	.130	.120	.111	.111	.103	.095	.076	.071	.066	.044	.041	.038	.014	.013	.012	
2.0	.118	.101	.087	.101	.087	.075	.069	.060	.052	.040	.035	.031	.013	.011	.010	
3.0	.108	.087	.069	.093	.075	.060	.064	.052	.042	.037	.030	.025	.012	.010	.008	
4.0	.100	.075	.057	.085	.065	.049	.059	.045	.035	.034	.027	.020	.011	.009	.007	
5.0	.092	.066	.047	.079	.057	.041	.055	.040	.029	.032	.023	.017	.010	.008	.006	
6.0	.086	.059	.039	.074	.051	.034	.051	.036	.024	.030	.021	.014	.010	.007	.005	
7.0	.081	.053	.033	.069	.046	.029	.048	.032	.021	.028	.019	.012	.009	.006	.004	
8.0	.076	.048	.029	.065	.042	.025	.045	.029	.018	.026	.017	.011	.009	.006	.004	
9.0	.072	.044	.025	.062	.038	.022	.043	.027	.016	.025	.016	.009	.008	.005	.003	
10.0	.068	.040	.022	.059	.035	.019	.041	.025	.014	.024	.015	.008	.008	.005	.003	

C Range: 0 - 360DEG
C Interval: 30.0DEG
Test Speed: HIGH
Temperature:25.3℃
Operators:zoe
Test Date:2024-10-16

Range: 0 - 180DEG
Interval: 1.0DEG
Test System:EVERFINE GO-SPEX500_V1 SYSTEM V2.00.461
Humidity:65.0%
Test Distance:3.160m [K=1.0000]
Remarks: LAMP:BXEX-30G-11H-3A-00-0-0 Ra:90
LENS:20R
NOT DRIVER:300mA
30minutes warm-up

UGR(Unified Glare Rating) Table

Test:U:2.9254V I:0.3000A P:0.8776W PF:1.0000 Freq:49.99Hz Lamp Flux:99.5902x1 lm										
NAME: 2468.105					TYPE:			WEIGHT:		
SPEC.: 3000K					DIM.:			SERIAL No.: 2410161251		
MFR.: RISE					SUR.: 0.00005024m2			Shielding Angle:		
ceiling/cavity	0.7	0.7	0.5	0.5	0.3	0.7	0.7	0.5	0.5	0.3
walls	0.5	0.3	0.5	0.3	0.3	0.5	0.3	0.5	0.3	0.3
working plane	0.2	0.2	0.2	0.2	0.2	0.2	0.2	0.2	0.2	0.2
Room dimensions	Viewed crosswise					Viewed endwise				
x = 2H y = 2H	31.3	32.1	31.5	32.3	32.5	31.7	32.6	32.0	32.7	32.9
3H	31.8	32.6	32.1	32.8	33.0	32.5	33.3	32.8	33.5	33.7
4H	32.1	32.8	32.3	33.0	33.2	32.9	33.6	33.1	33.8	34.0
6H	32.3	33.0	32.6	33.2	33.5	33.1	33.8	33.4	34.0	34.3
8H	32.3	33.0	32.6	33.3	33.5	33.1	33.8	33.4	34.1	34.3
12H	32.4	33.1	32.7	33.3	33.6	33.2	33.8	33.5	34.1	34.4
4H 2H	31.5	32.2	31.8	32.5	32.7	31.9	32.7	32.2	32.9	33.1
3H	32.1	32.8	32.4	33.0	33.3	32.9	33.6	33.2	33.8	34.1
4H	32.4	33.0	32.8	33.3	33.6	33.3	33.9	33.7	34.2	34.5
6H	32.7	33.3	33.1	33.6	33.9	33.7	34.2	34.0	34.5	34.9
8H	32.9	33.3	33.2	33.7	34.1	33.8	34.3	34.2	34.6	35.0
12H	33.0	33.4	33.4	33.8	34.2	33.8	34.3	34.3	34.7	35.1
8H 4H	32.5	33.0	32.9	33.4	33.8	33.4	33.9	33.8	34.2	34.6
6H	32.9	33.3	33.3	33.7	34.1	33.8	34.2	34.2	34.6	35.0
8H	33.1	33.5	33.5	33.9	34.3	34.0	34.3	34.4	34.8	35.2
12H	33.3	33.6	33.8	34.0	34.5	34.1	34.4	34.6	34.9	35.3
12H 4H	32.5	33.0	32.9	33.4	33.7	33.4	33.8	33.8	34.2	34.6
6H	32.9	33.3	33.4	33.7	34.2	33.8	34.2	34.3	34.6	35.0
8H	33.1	33.5	33.6	33.9	34.4	34.0	34.3	34.5	34.8	35.2
Variations with the observer position at spacings(CIE Pub.117):										
S = 1.0H	+ 0.8 / - 0.9					+ 0.5 / - 0.7				
1.5H	+ 1.2 / - 1.0					+ 0.6 / - 0.5				
2.0H	+ 1.7 / - 1.4					+ 1.0 / - 0.6				

CIE Pub.117, 99.59 lm Total Lamp Luminous Flux Correct (8log(F/F0) = -8.0)
Area: 5.024e-005 m2

C Range: 0 - 360DEG
C Interval: 30.0DEG
Test Speed: HIGH
Temperature:25.3℃
Operators:zoe
Test Date:2024-10-16

Range: 0 - 180DEG
Interval: 1.0DEG
Test System:EVERFINE GO-SPEX500_V1 SYSTEM V2.00.461
Humidity:65.0%
Test Distance:3.160m [K=1.0000]
Remarks: LAMP:BXEX-30G-11H-3A-00-0-0 Ra:90
LENS:20R
NOT DRIVER:300mA
30minutes warm-up

UTILIZATION FACTORS TABLE

Test:U:2.9254V I:0.3000A P:0.8776W PF:1.0000 Freq:49.99Hz Lamp Flux:99.5902x1 lm		
NAME: 2468.105	TYPE:	WEIGHT:
SPEC.: 3000K	DIM.:	SERIAL No.: 2410161251
MFR.: RISE	SUR.: 0.00005024m2	Shielding Angle:

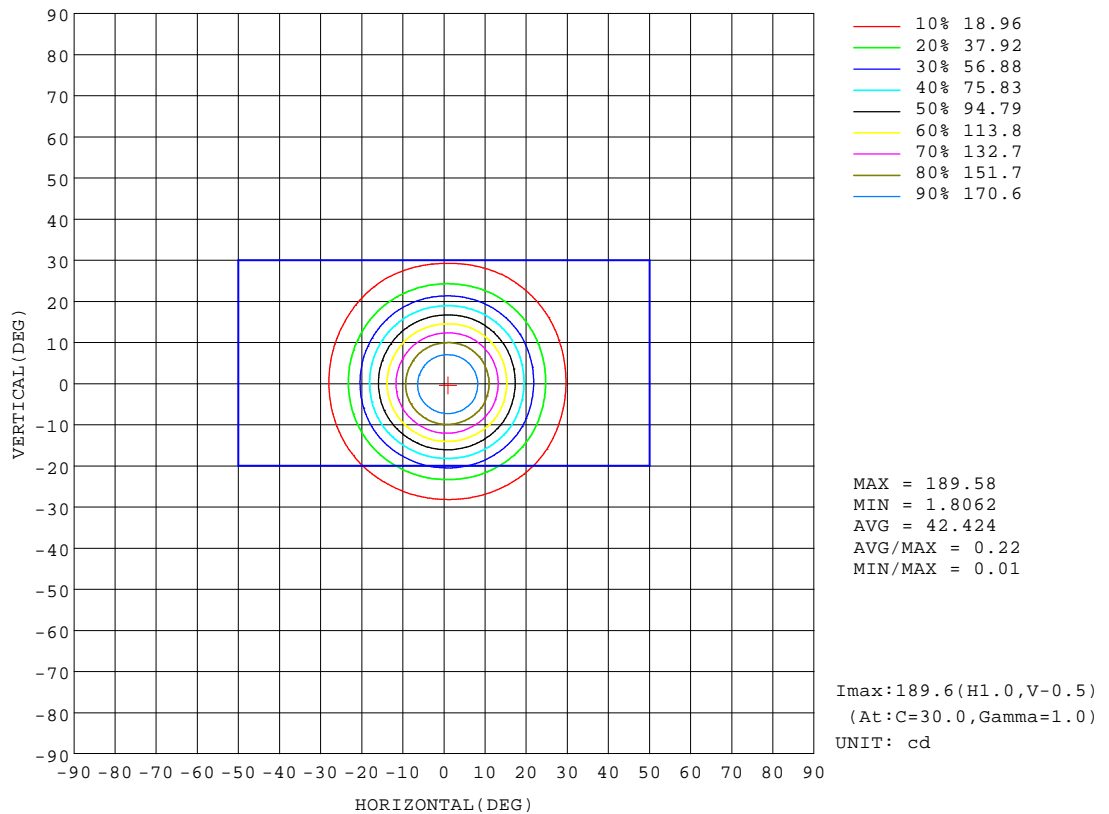
REFLECTANCE										
Ceiling	0.8	0.8	0.8	0.7	0.7	0.7	0.5	0.5	0.5	0
Walls	0.7	0.5	0.3	0.7	0.5	0.3	0.7	0.5	0.3	0
Working plane	0.2	0.2	0.2	0.2	0.2	0.2	0.2	0.2	0.2	0
ROOM INDEX	UTILIZATION FACTORS(PERCENT) $k(RI) \times RCR = 5$									
k = 0.60	65	59	56	64	59	56	64	59	56	53
0.80	70	66	62	70	65	62	69	65	62	59
1.00	74	69	66	73	69	66	72	69	66	63
1.25	77	73	70	76	73	70	75	72	69	66
1.50	79	76	73	79	75	72	77	74	72	68
2.00	82	78	76	81	78	75	79	76	74	70
2.50	83	80	78	82	79	77	80	77	75	71
3.00	85	82	79	83	81	79	81	79	77	72
4.00	86	84	82	85	83	81	82	80	79	73
5.00	87	85	84	86	84	83	83	81	80	74
ROOM INDEX	UF(total)									Direct
According to DIN EN 13032-2 2004			Suspended					SHRNOM = 1.25		

C Range: 0 - 360DEG
C Interval: 30.0DEG
Test Speed: HIGH
Temperature:25.3℃
Operators:zoe
Test Date:2024-10-16

Range: 0 - 180DEG
Interval: 1.0DEG
Test System:EVERFINE GO-SPEX500_V1 SYSTEM V2.00.461
Humidity:65.0%
Test Distance:3.160m [K=1.0000]
Remarks: LAMP:BXEX-30G-11H-3A-00-0-0 Ra:90
LENS:20R
NOT DRIVER:300mA
30minutes warm-up

ISOCANDELA DIAGRAM

Test:U:2.9254V I:0.3000A P:0.8776W PF:1.0000 Freq:49.99Hz Lamp Flux:99.5902x1 lm		
NAME: 2468.105	TYPE:	WEIGHT:
SPEC.: 3000K	DIM.:	SERIAL No.: 2410161251
MFR.: RISE	SUR.: 0.00005024m2	Shielding Angle:

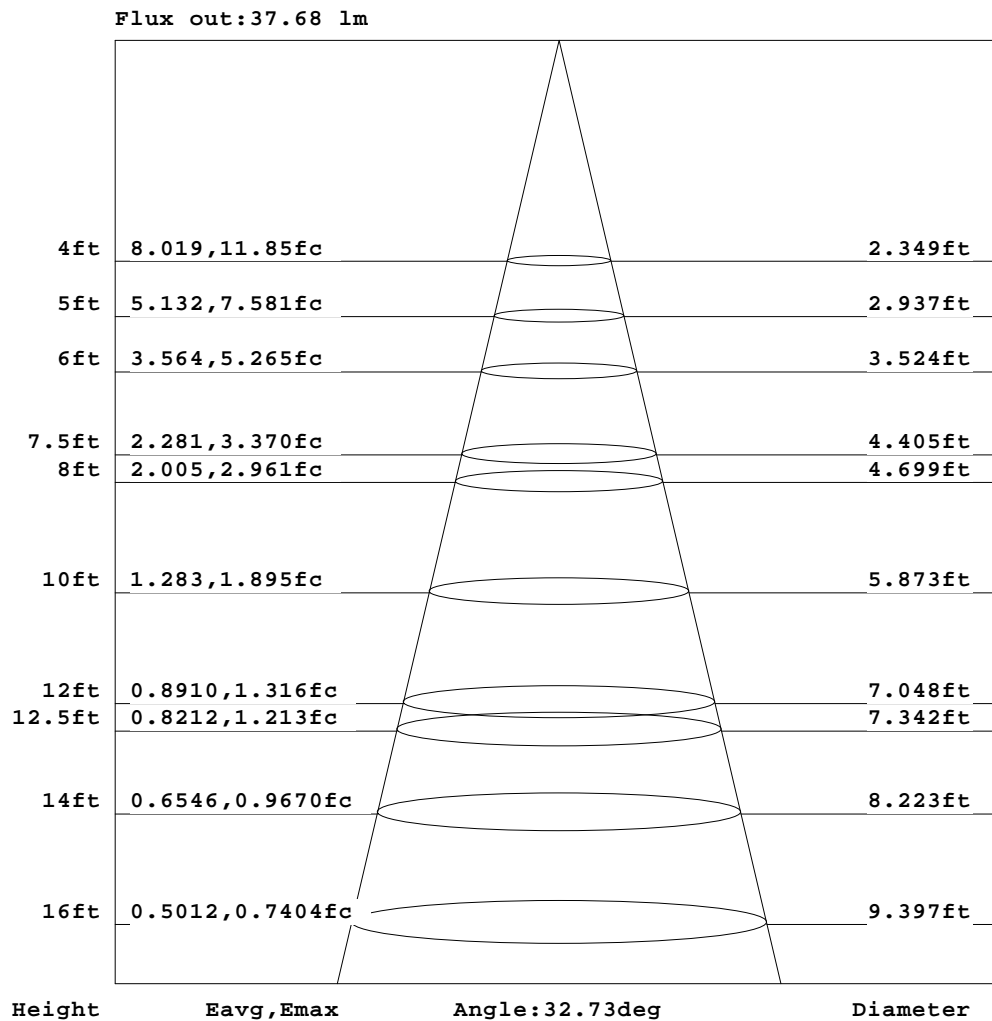


C Range: 0 - 360DEG
C Interval: 30.0DEG
Test Speed: HIGH
Temperature:25.3℃
Operators:zoe
Test Date:2024-10-16

Range: 0 - 180DEG
Interval: 1.0DEG
Test System:EVERFINE GO-SPEX500_V1 SYSTEM V2.00.461
Humidity:65.0%
Test Distance:3.160m [K=1.0000]
Remarks: LAMP:BXEX-30G-11H-3A-00-0-0 Ra:90
LENS:20R
NOT DRIVER:300mA
30minutes warm-up

AAI Figure

Test:U:2.9254V I:0.3000A P:0.8776W PF:1.0000 Freq:49.99Hz Lamp Flux:99.5902x1 lm		
NAME: 2468.105	TYPE:	WEIGHT:
SPEC.: 3000K	DIM.:	SERIAL No.: 2410161251
MFR.: RISE	SUR.: 0.00005024m2	Shielding Angle:



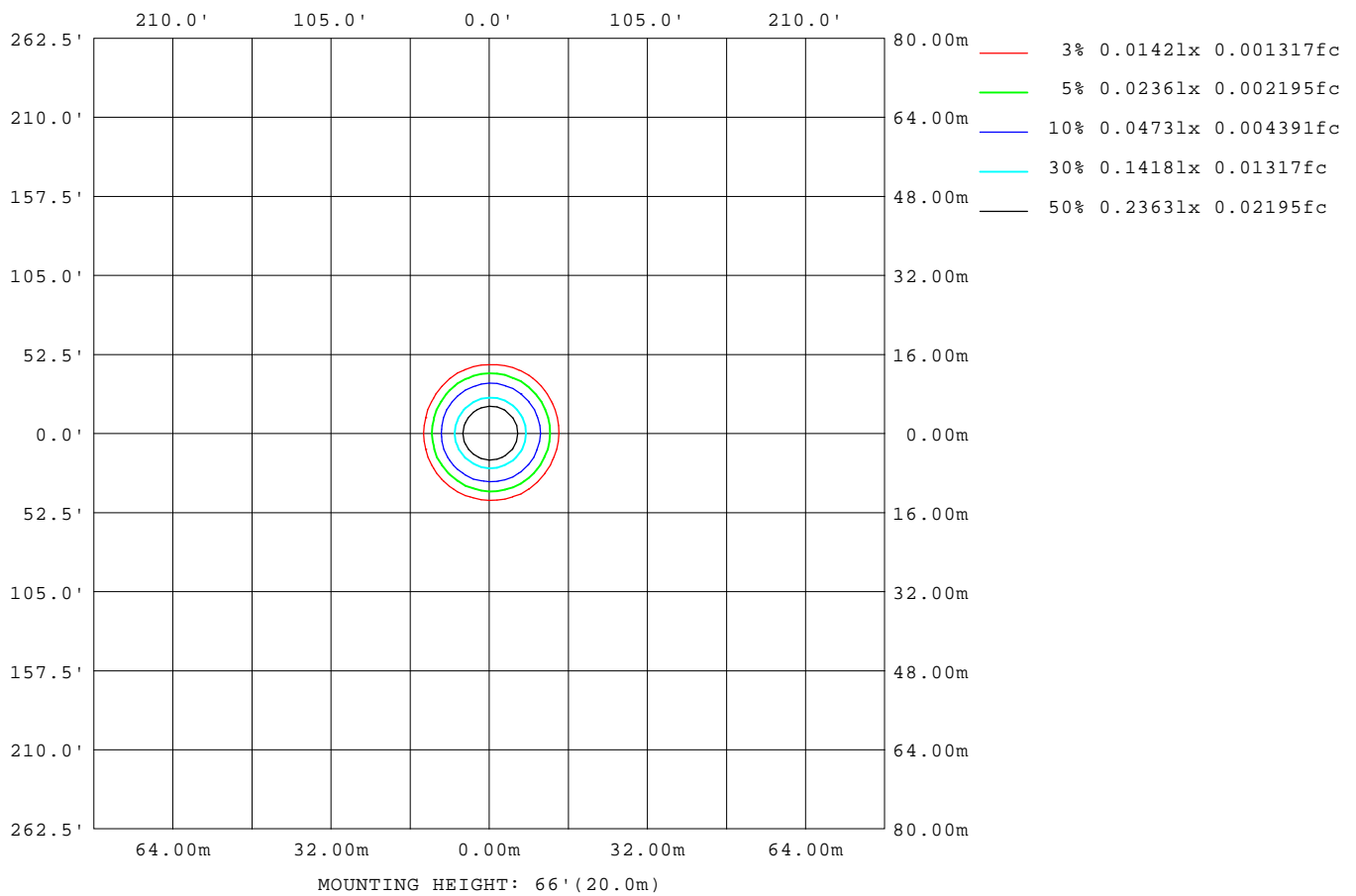
Note: The Curves indicate the illuminated area and the average illumination when the luminaire is at different distance.

C Range: 0 - 360DEG
C Interval: 30.0DEG
Test Speed: HIGH
Temperature: 25.3℃
Operators: zoe
Test Date: 2024-10-16

Range: 0 - 180DEG
Interval: 1.0DEG
Test System: EVERFINE GO-SPEX500_V1 SYSTEM V2.00.461
Humidity: 65.0%
Test Distance: 3.160m [K=1.0000]
Remarks: LAMP: BXEX-30G-11H-3A-00-0-0 Ra: 90
LENS: 20R
NOT DRIVER: 300mA
30minutes warm-up

ISOLUX DIAGRAM

Test:U:2.9254V I:0.3000A P:0.8776W PF:1.0000 Freq:49.99Hz Lamp Flux:99.5902x1 lm		
NAME: 2468.105	TYPE:	WEIGHT:
SPEC.: 3000K	DIM.:	SERIAL No.: 2410161251
MFR.: RISE	SUR.: 0.00005024m2	Shielding Angle:



C Range: 0 - 360DEG
C Interval: 30.0DEG
Test Speed: HIGH
Temperature:25.3℃
Operators:zoe
Test Date:2024-10-16

Range: 0 - 180DEG
Interval: 1.0DEG
Test System:EVERFINE GO-SPEX500_V1 SYSTEM V2.00.461
Humidity:65.0%
Test Distance:3.160m [K=1.0000]
Remarks: LAMP:BXEX-30G-11H-3A-00-0-0 Ra:90
LENS:20R
NOT DRIVER:300mA
30minutes warm-up

LED Avg.L Report

Test:U:2.9254V I:0.3000A P:0.8776W PF:1.0000 Freq:49.99Hz Lamp Flux:99.5902x1 lm		
NAME: 2468.105	TYPE:	WEIGHT:
SPEC.: 3000K	DIM.:	SERIAL No.: 2410161251
MFR.: RISE	SUR.: 0.00005024m2	Shielding Angle:

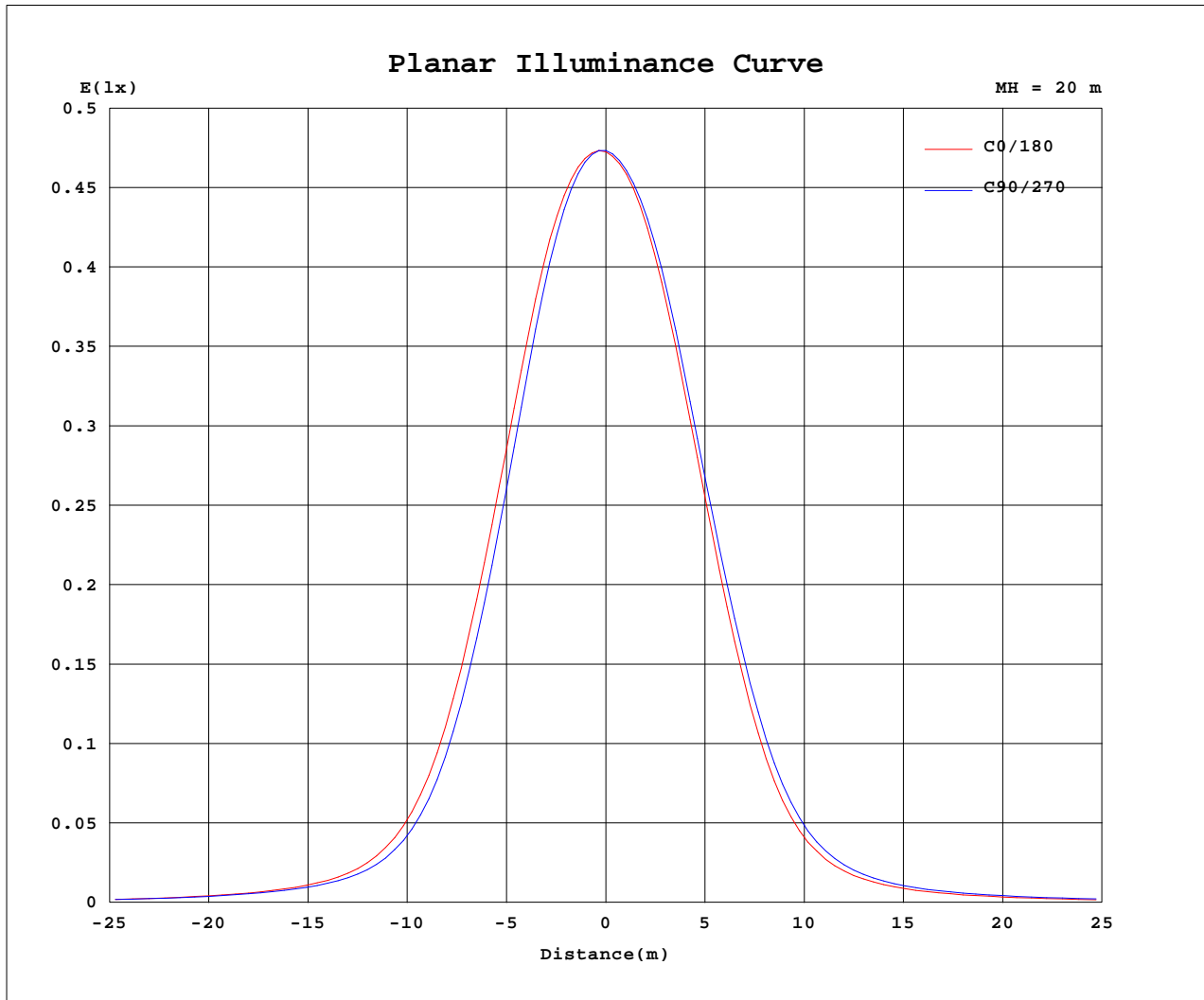
AvgL	cd/m2
L_0~180(65)av	63458
L_0~180(75)av	50829
L_0~180(85)av	46734
L_90~270(65)av	76885
L_90~270(75)av	60529
L_90~270(85)av	51136
L_45(65)av	67239
L_45(75)av	52662
L_45(85)av	48308

Standard: GB/T 29293-2012

C Range: 0 - 360DEG
C Interval: 30.0DEG
Test Speed: HIGH
Temperature:25.3℃
Operators:zoe
Test Date:2024-10-16

Range: 0 - 180DEG
Interval: 1.0DEG
Test System:EVERFINE GO-SPEX500_V1 SYSTEM V2.00.461
Humidity:65.0%
Test Distance:3.160m [K=1.0000]
Remarks: LAMP:BXEX-30G-11H-3A-00-0-0 Ra:90
LENS:20R
NOT DRIVER:300mA
30minutes warm-up

Planar Illuminance Curve



C Range: 0 - 360DEG
 C Interval: 30.0DEG
 Test Speed: HIGH
 Temperature: 25.3 °C
 Operators: zoe
 Test Date: 2024-10-16

Range: 0 - 180DEG
 Interval: 1.0DEG
 Test System: EVERFINE GO-SPEX500_V1 SYSTEM V2.00.461
 Humidity: 65.0%
 Test Distance: 3.160m [K=1.0000]
 Remarks: LAMP: BXEX-30G-11H-3A-00-0-0 Ra: 90
 LENS: 20R
 NOT DRIVER: 300mA
 30minutes warm-up



LUMINOUS DISTRIBUTION INTENSITY DATA

Test:U:2.9254V I:0.3000A P:0.8776W PF:1.0000 Freq:49.99Hz Lamp Flux:99.5902x1 lm		
NAME: 2468.105	TYPE:	WEIGHT:
SPEC.: 3000K	DIM.:	SERIAL No.: 2410161251
MFR.: RISE	SUR.: 0.00005024m2	Shielding Angle:

Table--1

UNIT: cd

C(DEG) (DEG)	0	30	60	90	120	150	180	210	240	270	300	330						
0	189	189	189	189	189	189	189	189	189	189	189	189						
5	184	185	183	182	180	179	177	177	178	179	181	183						
10	159	159	155	151	148	147	147	146	148	151	155	158						
15	117	115	109	105	102	103	103	104	106	109	114	116						
20	71.4	69.8	65.0	60.6	58.6	59.5	60.0	61.0	63.7	66.6	70.2	72.1						
25	36.5	35.2	32.1	29.6	28.3	28.4	29.0	29.9	31.9	33.9	35.9	36.9						
30	18.1	17.4	16.2	14.8	14.2	14.2	14.3	14.8	16.4	17.1	18.4	18.5						
35	10.2	9.86	9.80	8.89	8.86	8.49	8.29	8.36	9.60	9.87	10.8	10.7						
40	6.83	6.48	6.69	6.18	6.36	5.90	5.51	5.37	6.49	6.64	7.40	7.19						
45	4.87	4.49	4.83	4.51	4.66	4.38	4.08	3.75	4.82	4.97	5.59	5.25						
50	3.49	3.07	3.55	3.39	3.37	3.33	3.12	2.66	3.73	3.90	4.35	3.91						
55	2.44	2.02	2.59	2.53	2.41	2.55	2.34	1.83	2.89	2.99	3.30	2.85						
60	1.74	1.35	1.93	1.93	1.77	2.01	1.82	1.31	2.27	2.32	2.51	2.09						
65	1.29	0.96	1.46	1.48	1.32	1.56	1.41	0.97	1.74	1.78	1.90	1.56						
70	0.92	0.68	1.06	1.08	0.95	1.14	1.04	0.71	1.25	1.29	1.35	1.11						
75	0.62	0.47	0.70	0.71	0.64	0.75	0.70	0.49	0.82	0.86	0.90	0.74						
80	0.38	0.30	0.41	0.42	0.41	0.44	0.43	0.33	0.49	0.52	0.55	0.44						
85	0.20	0.17	0.18	0.18	0.19	0.18	0.21	0.20	0.25	0.27	0.29	0.23						
90	0.00	0.00	0.00	0.00	0.00	0.00	0.00	0.00	0.00	0.00	0.00	0.00						
95	0.00	0.00	0.00	0.00	0.00	0.00	0.00	0.00	0.00	0.00	0.00	0.00						
100	0.00	0.00	0.00	0.00	0.00	0.00	0.00	0.00	0.00	0.00	0.00	0.00						
105	0.00	0.00	0.00	0.00	0.00	0.00	0.00	0.00	0.00	0.00	0.00	0.00						
110	0.00	0.00	0.00	0.00	0.00	0.00	0.00	0.00	0.00	0.00	0.00	0.00						
115	0.00	0.00	0.00	0.00	0.00	0.00	0.00	0.00	0.00	0.00	0.00	0.00						
120	0.00	0.00	0.00	0.00	0.00	0.00	0.00	0.00	0.00	0.00	0.00	0.00						
125	0.00	0.00	0.00	0.00	0.00	0.00	0.00	0.00	0.00	0.00	0.00	0.00						
130	0.00	0.00	0.00	0.00	0.00	0.00	0.00	0.00	0.00	0.00	0.00	0.00						
135	0.00	0.00	0.00	0.00	0.00	0.00	0.00	0.00	0.00	0.00	0.00	0.00						
140	0.00	0.00	0.00	0.00	0.00	0.00	0.00	0.00	0.00	0.00	0.00	0.00						
145	0.00	0.00	0.00	0.00	0.00	0.00	0.00	0.00	0.00	0.00	0.00	0.00						
150	0.00	0.00	0.00	0.00	0.00	0.00	0.00	0.00	0.00	0.00	0.00	0.00						
155	0.00	0.00	0.00	0.00	0.00	0.00	0.00	0.00	0.00	0.00	0.00	0.00						
160	0.00	0.00	0.00	0.00	0.00	0.00	0.00	0.00	0.00	0.00	0.00	0.00						
165	0.00	0.00	0.00	0.00	0.00	0.00	0.00	0.00	0.00	0.00	0.00	0.00						
170	0.00	0.00	0.00	0.00	0.00	0.00	0.00	0.00	0.00	0.00	0.00	0.00						
175	0.00	0.00	0.00	0.00	0.00	0.00	0.00	0.00	0.00	0.00	0.00	0.00						
180	0.00	0.00	0.00	0.00	0.00	0.00	0.00	0.00	0.00	0.00	0.00	0.00						

C Range: 0 - 360DEG
C Interval: 30.0DEG
Test Speed: HIGH
Temperature:25.3℃
Operators:zoe
Test Date:2024-10-16

Range: 0 - 180DEG
Interval: 1.0DEG
Test System:EVERFINE GO-SPEX500_V1 SYSTEM V2.00.461
Humidity:65.0%
Test Distance:3.160m [K=1.0000]
Remarks: LAMP:BXEX-30G-11H-3A-00-0-0 Ra:90
LENS:20R
NOT DRIVER:300mA
30minutes warm-up